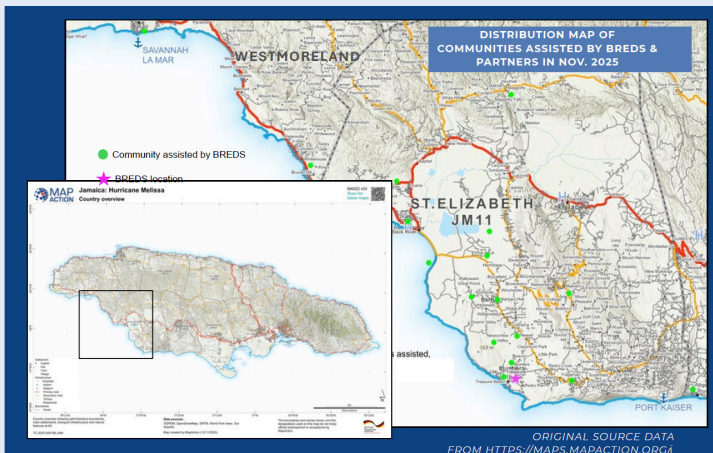




# Hurricane Melissa Impact Report

As of December 12, 2025

Following the passage of Hurricane Melissa on October 28th 2025, Jamaica has experienced an unprecedented degree of destruction and damage, encompassing a financial toll that is currently estimated by the World Bank at USD 8.8 billion. No stranger to the effects of natural disaster (Hurricane Beryl hit St. Elizabeth just 16 months prior), BREDS has risen to the occasion to deliver immediate on the ground relief to the eight districts that comprise the Treasure Beach community, but also to the hardest hit neighboring communities to the West. Below is an impact report that highlights the varied work BREDS has undertaken during the first thirty days of recovery post-Melissa.



## Relief Items Delivered to 37 Communities

### > 3,000 Aid Packages & Bottled H2O

In partnership with entities such as CORE, JDF, All Hands & Hearts and GEM

### > 1700 Hot Meals

In partnership with BREDS, World Central Kitchen, Mercy Chefs and individuals have provided hot meals

### Several Hundred Roof Repairs

Done with community members and relief organisations like All Hands & Hearts

### > 150 Fishers Received Wire for Fishpots

Fishers can start work as soon as possible to provide a protein source to people

### > 100 Medical Packages

Delivered across SW St. Elizabeth

### Running H2O for 3,000 Families

National Water Commission (NWC) is supplying water from Newell pumping station using a BREDS generator bought post Beryl

### The Jamaica Defense Force

JDF, who have a base at the sports park, have delivered approx 3,000 care packages from ODPEM.

Breds is a non-profit community organization based in Treasure Beach, Jamaica. Run primarily by volunteers, and funded entirely by donations, partnerships, and sponsors, Breds has worked alongside Treasure Beach residents to strengthen the community for nearly three decades. Throughout the years, Breds has established successful sport, education, youth development, and health initiatives in the community that are well known both locally and internationally for their grassroots, personalized approach.

**PLEASE DONATE**



## Rebuilding Hearts + Souls

With the tremendous learnings and success of BREDS' "Building Back Better" efforts after Hurricane Beryl, BREDS has now focused its post-Melissa efforts on a four phase plan of relief for the community. BREDS capacity is tied to the amount of incoming donations, and as such the organization prioritizes the areas with highest need in our community. While BREDS may not be able to meet every request, the team works with care, fairness, and transparency to assist as many families as possible.

**We would like to thank our partners, donors and wider community, without whom we could not have achieved all the work.**

All Hands and Hearts  
Ambassador Sue Cobb  
Americares  
American Friends of Jamaica (AFJ)  
Appliance Traders Ltd  
Ashley's Variety Store  
Bob Marley Foundation  
The Burke Family in Grand Cayman  
Canadian Public Service Alliance  
Cape Cod ♥ Treasure Beach  
Chris Gayle Foundation  
Community Organized Relief Effort (CORE)  
Creators of Hope  
Donovan White and Friends  
Food for the Poor  
Food, Rum and Reggae Festival  
Friends of Jakes Hotel  
Friends of Treasure Beach  
Global Emergency Relief, Recovery & Reconstruction (GER)  
Global Empowerment Mission (GEM)  
Grace Kennedy  
Harris Pools  
H&L Agro  
Helping Hands Jamaica Foundation  
House of Lords & Commons Cricket Club  
Issa Construction  
Jakes Hotel  
Jamaica Constabulary Force (JCF)  
Jamaica Defence Force (JDF) inc. Air Wing & Coast Guard  
Jamaica Tourist Board  
Justin and Lara Morin  
Kate and Todd Novak  
Max Henzell & Alexandra Azan  
Mercy Chefs  
Ministry of Agriculture, Fisheries & Mining  
Ministry of Health and Wellness  
National Fisheries Authority  
Office of Disaster Preparedness and Emergency Management (ODPEM)  
Operation Helo  
Paul, Jake, Drew Alberga  
Philadelphia Men's Basketball League (PMBL)  
Rainbow Tree  
Richard & Diana Stewart Foundation  
Samaritan's Purse  
Seaweed  
Select Brands  
Seprod  
Shaggy Make a Difference Foundation  
Shakti  
Smurfs  
Tankweld Ltd.  
Treasure Tours  
Unicef  
World Central Kitchen  
Wisynco

# Breds Four Phases Of Relief

## Phase I

### Critical Needs/Emergency Relief

This phase primarily entails the collection and distribution of water, food, generators, and Starlink connectivity to those in need. In this Phase, BREDS worked to get into the hardest to reach places including communities along the South Coast only accessible by water. BREDS also worked with the Coast Guard and other partners to create the most access to the hardest hit areas. Currently the Jamaica Defense Force (JDF) operates out of the BREDS Sports Park in Treasure Beach, creating a dynamic distribution and logistics hub right in the heart of our community.

## Phase II

### Building Back Livelihoods

In our farming and fishing community, assisting the fishing, agriculture, and hospitality sector to regain productivity is essential to rebuilding our region's earning power and sustainability. Highlights include the purchase and supply of fishing wire, a farming voucher program in partnership with H+L Agro, and seed and input distribution in partnership with RADA (Rural Agricultural Development Network), and the establishment of a Hospitality Worker Relief Fund to community tourism workers furloughed due to Melissa.

## Phase III

### Health & Shelter/Rebuilding Homes & Infrastructure at Sports Park

In this phase, Breds seeks to help community members rebuild structures that were damaged in storms. Mobile health clinics and pop ups assist community members in receiving healthcare needed while more permanent healthcare infrastructure is restored. Damages to the Treasure Beach Sports Park will be repaired.

## Phase IV

### Legacy Project

Approved by the St. Elizabeth Municipal Corporation, the Treasure Beach Health Centre (TBHC) will serve the community healthcare needs of the greater Treasure Beach region and Southwest St. Elizabeth for years to come. The TBHC will be located at the Sports Park, and will also serve as a climate resilient structure in future storms, along with housing visiting medical professionals.

Treasure Beach  
St. Elizabeth, Jamaica

